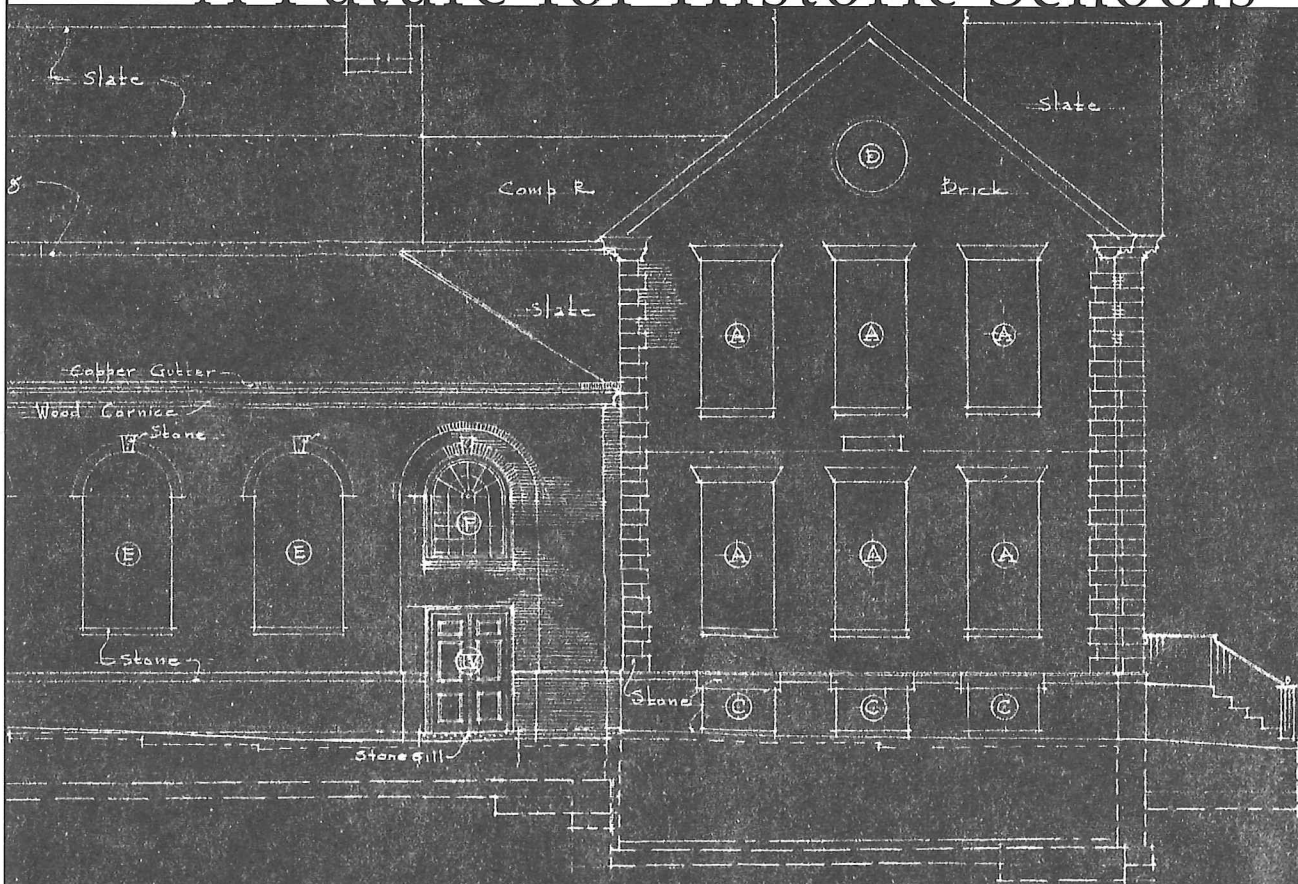


A Future for Historic Schools



EVATION

THE ANDREWS MEMORIAL SCHOOL
BRISTOL RHODE ISLAND

THE 19TH ANNUAL RHODE ISLAND STATEWIDE

Historic Preservation Conference

RHODE ISLAND HISTORICAL PRESERVATION & HERITAGE COMMISSION

SATURDAY, APRIL 24, 2004 • BRISTOL, RI

Conference Agenda

8:30-9:00	9:00-10:45		11:15-12:30		2:00-3:15		3:45-5:00	5:00-6:00		
Registration <i>at Andrews School</i>	Opening Session Welcoming Remarks Keynote Address 2004 State Preservation Awards <i>at Andrews School</i>	B R E A K	Session A <i>Consult guide for locations</i>	L U N C H	Session B <i>Consult guide for locations</i>	B R E A K	Session C <i>Consult guide for locations</i>	Closing Reception <i>at the Herreshoff Marine Museum</i>		
B 3-hour tours										

Keynote Address



It Takes a Village: How the Preservation of Historic Schools in Massachusetts Protects, Connects, and Strengthens Our Communities

James G. Alexander FAIA, *Principal-in-Charge, Finegold Alexander + Associates*
James W. Igoe, *Executive Director, PreservatiON MASS*

PreservatiON MASS (formerly Historic Massachusetts) organized the **Historic School Building Initiative** to confront the ongoing demolition of historic school buildings due to a state reimbursement policy that favored and funded new construction over renovation. PreservatiON MASS advocated successfully for changes to state policy and issued a report—*School Building Initiative: An Endangered Resource*—to assist local school boards and communities in planning for the reuse of historic neighborhood schools. Alexander and Igoe will discuss issues, challenges, and successful school preservation projects.

James G. Alexander FAIA has dedicated his career to preserving landmark buildings and is a noted authority in the preservation and reuse of historic structures. His many award-winning projects at FA+A include the Ellis Island National Monument and Museum of Immigration and the Bunker Hill Community College Chelsea Campus. Among his historic school projects are Boston Latin Academy and Brookline High School. He is presently Vice Chair of PreservatiON MASS.

James W. Igoe was appointed Executive Director of PreservatiON MASS in 2002. He established the Massachusetts Preservation Coalition, an alliance of local, state, and national organizations to advocate for historic preservation and promote legislative agendas, such as the new 20% state historic preservation tax credit for commercial properties. He was the Executive Director of Preservation Worcester for over six years prior to joining PreservatiON MASS.

Session

A



A1 Historic Schools: Architectural Alternatives

SITE Bristol Statehouse, 240 High St

David Bourns, *Head of School*, Paul Cuffee School, Providence

Greg Burns, *Project Executive*, Consigli Construction, Milford, MA

Drayton Fair AIA, *Partner*, Lerner | Ladds + Bartels

Laura Wernick AIA, *Vice President*, HMFH Architects, Cambridge, MA

with James G. Alexander FAIA, *Principal-in-Charge*, Finegold Alexander + Associates

Maintenance, rehab, new addition, relocation. . . when public school facilities need upgrading, what are the options? This panel will review recent projects like the Thompson Middle School in Newport, the Lawrence School in Brookline (MA), and the Paul Cuffee School in Providence, which recently opened in a rehabbed 1930s garage building. Tackle the nitty gritty—cost per square foot, code compliance, historic district zoning, and technology upgrades—and also consider the role of the architect in the public (school) realm.

A2 Let's Put on a Show! White Elephant or Arts Venue?

SITE Pastime Theater, 91 Bradford St

Adele Marchbank (*Executive Director*) and Robert Picard (*President*), Stadium Theatre Foundation (Woonsocket)

Randy Rosenbaum, *Executive Director*, RI State Council on the Arts

Emily Uddin-Alves, *Board Member*, Southside Broad St/Bomes Theatre (Providence)

Gary Watros, *Board Member*, Pastime Theater Foundation (Bristol)

Martina Windels, *President*, Hive Archive (Providence)

Sarah Zurier, *Special Projects Coordinator*, RIHPHC

Threatened by underuse or demolition, that terrific old building in your town could become a thriving arts venue. The session is hosted by the Pastime Theater Foundation, which recently acquired a 1934 cinema in order to restore the exterior and renovate the interior for performing arts and film. Join representatives from successful new venues, from start-up groups, and from the arts and preservation fields for a practical round-table discussion.

A3 Harnessing Volunteer Power for Your Organization

SITE Burnside Building, 400 Hope St

Suzanne Buchanan, *Ranger*, John H. Chafee Blackstone River Valley National Heritage Corridor

Angelo Fraioli, *Volunteer-at-Large* (too many sites to count)

Kelly Nevins, *Executive Director*, Volunteer Center of Rhode Island

Patricia M. Read, *President*, Massasoit Historical Association (Warren)

Fund-raising, painting, researching, envelope-stuffing, giving tours—you name it, and volunteers do it. Discover how a clearinghouse for volunteers coordinates projects throughout the Blackstone Valley. Learn how an all-volunteer organization not only operates the historic Maxwell House in Warren but also has taken an active role in community life for almost a century. And hear firsthand from a veteran of the John Brown House, RISD Museum, Blithewold, and the Providence Preservation Society about expectations and realities from the volunteer's perspective.

A4 Decorative Finishes Workshop: History and Analysis

DEPARTS On bus outside Andrews School to 190 High St

John Vaughan, *Principal*, Architectural Conservation Services

Visit the office and laboratory of Architectural Conservation Services for a unique lecture and demonstration. By observing how to make historic paints and how to conduct investigative analysis, participants will learn about architectural finishes and the information they reveal. John Vaughan has worked on numerous finish investigations, including President James Madison's Montpelier (VA), the Mark Twain House (CT), Harriet Tubman's Home & Church (NY), and more modest structures such as one-room schoolhouses. (Limited to 15 participants)

A5 Helping Hands: Professional Consultants in Preservation

SITE Bristol Harbor Inn Conference Room, 259 Thames St

Kathryn J. Cavanaugh, *Preservation Consultant*

Frederick C. Stachura, *Founding Principal*, The Historic Collaborative

Need help with your preservation project? Want to share your expertise by going into business for yourself? Explore professional preservation consulting: when and why to hire a consultant, where to find the help you need, what to expect, and how to be a good client. Experts will offer tips on defining the project, identifying constraints, good communication, fees and expenses, proposals and contracts, scheduling, and conflicts of interest, as well as the pros and cons of freelancing.

A6 A Toy Car, a Fireplace, a Death's Head, and a 12-over-12: University Fieldwork Projects

SITE Bristol Historical & Preservation Society, 48 Court St

Maitrayee Bhattacharyya, *Grants Director*, Rhode Island Council for the Humanities

Pierre Morenon, *Associate Professor of Anthropology*, Rhode Island College

Ronald Onorato, *Honors Professor of Art History*, University of Rhode Island

Myron Stachiw, *Associate Professor of Historic Preservation*, and students, Roger Williams University

Catherine Zipf, *Assistant Professor of Cultural and Historic Preservation*, and students, Salve Regina University

College students are doing groundbreaking fieldwork in archaeology, building technology research, material culture, and National Register documentation. Learn about the children of the State Home and School in Providence, and uncover the Rumford oven at Hearthsides in Lincoln. Also, explore the historic landscape of Newport's Common Burying Ground, and catch up on the history of the Fifth Ward, the heart of Irish Newport.

A7 In the Footsteps of James D'Wolf: Walking Tour

DEPARTS On bus outside Andrews School to 48 Court St

Reinhard Battcher III, *Curator and Librarian*, Bristol Historical & Preservation Society

Elizabeth "Bonnie" Warren, *Historian*, Bristol Historical & Preservation Society

Discover 30 buildings and sites known to James D'Wolf, Bristol's leading empire builder! Walk with local historians to learn how the D'Wolf clan came to dominate every aspect of Bristol life after the Revolution, including distilling, slaving, building, banking, and manufacturing. Find out what happened to D'Wolf's estate of over five million dollars and the battles of his heirs over this legacy.

A8 Wood St Neighborhood: Walking Tour

DEPARTS On foot outside Andrews School

Kevin Jordan, *Vice President*, Mosaico Community Development Corporation

Lisa Milano, *Director*, Mosaico Community Development Corporation

Formerly known as New Goree, Bristol's Wood St neighborhood was home to African-Americans in the 18th and early 19th centuries, followed by an ethnically diverse population, many of whom worked in the Kaiser Rubber Mill. As you walk the neighborhood to learn about its history and revitalization, learn how Mosaico's Sense of Pride program inspires fourth graders to become community historians and activists.

See also B4.

A9 Hope and High: Walking Tour

DEPARTS On foot outside Andrews School

Lombard John Pozzi, *Architect*

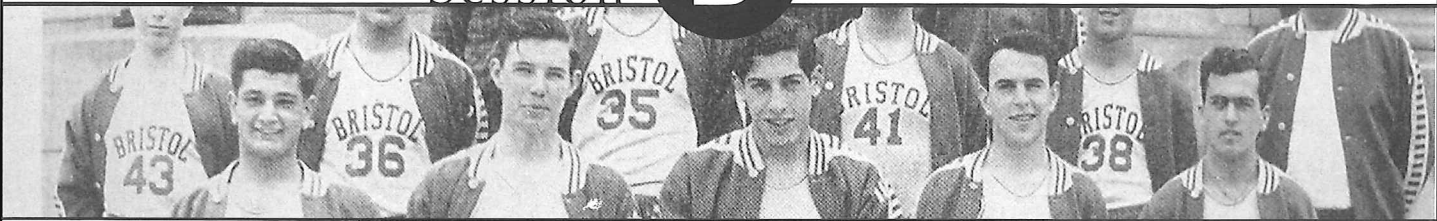
Dory Skemp, *Board Member*, Bristol Historical & Preservation Society

with John Grosvenor AIA, *Principal*, Newport Collaborative Architects

Bristol's distinctive urban and architectural design, characterized by grand scale and lavish detailing, make it unique among Rhode Island's traditional town centers. Sample the highlights, including the Bristol State House, Linden Place, and plans to rehab the Harriet Bradford Hotel.

Session

B



B1 Historic Schools: Grassroots Approaches to a Nationwide Issue

SITE Bristol Statehouse, 240 High St

Cristina DiChiera, *Program Director, Preserve Rhode Island*

Marilyn Fenollosa, *Senior Program Officer, Northeast Office of the National Trust for Historic Preservation*

Angela King Horne, *Chair and Founding Member, Save Our Small Schools (Tiverton) and Member of the Tiverton School Committee*

Georgina Macdonald, *Founding Member, Save Our Schools (Bristol)*

with Jim Igoe, *Executive Director, PreservatiON MASS*

Across America, historic schools are an endangered resource. Learn about national initiatives designed to promote historic schools as well as strategies used in Rhode Island cities and towns to save threatened historic school buildings. Grassroots approaches to preserving historic schools—including media campaigns, public forums and presentations, political pressure, fundraising, and coalition building—are practical strategies applicable to all preservation initiatives, from warding off chain stores to saving local landmarks.

B2 Eyes on the Road: An Introduction to Scenic Roadways

SITE Burnside Building, 400 Hope St

Ginny Leslie, *Planning Consultant and Former Planner, RI-DEM*

Paul R.V. Pawlowski AIA, ASLA, *Principal, Pawlowski Associates*

Barbara Petrarca ASLA, *Supervising Landscape Architect, RI-DOT*

Diane Williamson, *Principal Planner, Town of Bristol*

The Rhode Island Scenic Roadways Program helps communities protect scenic and historic landscapes by ensuring that proposed alterations to designated roadways are reviewed for their impact on identified resources. To date, several corridors have been designated as Scenic Roadways, including High and Hope streets in Bristol, Paradise Avenue in Middletown, and Veterans Memorial Parkway in East Providence. This session will introduce the Scenic Roadways Program and the resources that are available to communities from the Scenic Roadways Board.

B3 Window Workshop I: Restoring Historic Windows

SITE Pastime Theater, 91 Bradford St

Dennis Albert, *Chairman, Cranston Historic District Commission*

Robert J. Cagnetta, *President of Heritage Restoration, Inc. and President of the Preservation Training and Education Institute*

Lynn Furney, *Associate Planner, City of Cranston*

Roberta Randall, *Senior Historical Architect, RIHPHC*

Windows are a sticky subject for architects, homeowners, and ESPECIALLY historic district commissioners—how to persuade owners to keep their historic window sash, how to judge whether windows are really beyond repair, when to allow replacement windows, and which windows to permit. Window experts will lead a hands-on program. In Window Workshop I, examine windows, learn about their operation and parts, and hear about repair of historic sash. See C3 for Part II.

B4 A Factory Whistle, a Wood Stove, and a Stone Ender: Teaching with Historic Places

SITE Bristol Historical & Preservation Society, 48 Court St

George Christie, *School and Youth Program Coordinator, Society for the Preservation of New England Antiquities*

Lisa Milano, *Executive Director, Mosaico Community Development Corporation*

Denise Moretti-Foggo, *Fourth grade teacher, Hope Valley Elementary School (Hopkinton)*

Beverly Pettine, *Head Teacher, Hornbine School (Rehoboth)*

Local educators are teaching kids about history, culture, and technology by teaching about place. Discover an operating one-room schoolhouse, where children experience school life in the 1860s. Preview plans to launch an educational program at one of Rhode Island's oldest buildings, the Eleazer Arnold House in Lincoln. Learn about the Sense of Pride program which combines place-based learning and community service with powerful results (see also A8). The session will be moderated by a fourth grade teacher who makes Rhode Island history come alive by using guided imagery, real-life re-enactors, and actual historic experiences.

B5 Historic Schools: Bristol Elementary Schools Walking Tour

DEPARTS On foot outside Andrews School

Chris Spencer, *Member, Save Our Schools (Bristol)*

Bristol's remarkable historic schools occupy important sites in the downtown area and around the Town Common. These imposing structures, designed by prominent architects and made possible through the generosity of earlier generations, are evocative of a time when school buildings showcased public education as a community priority. Explore these buildings to gain insight into what makes them vital to the community, and

to envision how additions, abandonment, and other alternatives would impact the Town and its neighborhoods.

B6 Walking the Waterfront: Walking Tour

DEPARTS On foot outside Andrews School

J. Michael Abbott AIA, *Principal, Newport Collaborative Architects*

Lloyd Adams, *Partner, Thames St Landing*

Rick Greenwood, *Project Review, RIHPHC*

From Bristol's creation up to the present, the deep sheltered waters of Bristol Harbor have shaped the town and its fortunes. The Thames Street waterfront became the central node in an economic network that linked farmers, craftsmen, merchants, and manufacturers together through maritime trade. This walking tour will examine the rich and varied architectural legacy of the waterfront with a special focus on the adaptive reuse of the DeWolf wharf complex—one of the best-preserved collections of early waterfront architecture in New England.

B7 Haffenreffer Museum and King Philip's Seat Tour*

DEPARTS On bus outside Andrews School

Kevin Smith, *Chief Curator, Haffenreffer Museum of Anthropology*

Charlotte Taylor, *Archaeologist, RIHPHC*

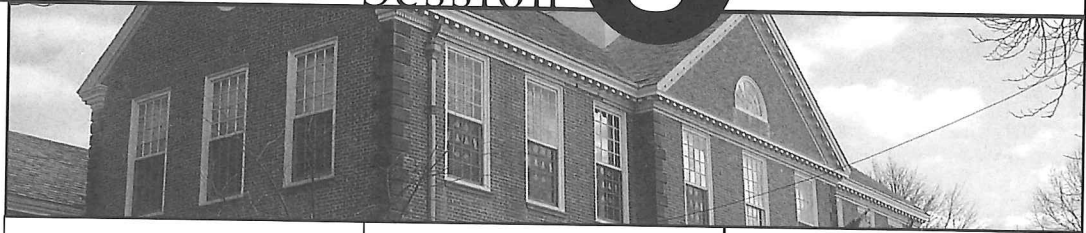
The Haffenreffer Museum is home to an extraordinary collection of objects and images from around the world. Outside the museum walls, the 375-acre property has been a central place in the homelands of the Wampanoag Indians for generations. After touring the exhibits, walk to the rocky outcrop known as King Philip's Chair, where the leader of the Wampanoags met with his councilors. Along the way, discuss what we have learned from this area's archaeological sites, and the mysteries that still remain unsolved.

Shuttle Buses make a circuit of downtown locations throughout the day.

Lunch is served at Andrews School, corner of Hope and Bradford Sts.

* 3-hour tour

Session



B8 Archaeology of the Revolutionary War on and around Aquidneck Island Tour*

DEPARTS On bus outside Andrews School

D.K. Abbass, *Director, Rhode Island Marine Archaeology Project*

Paul Robinson, *Archaeologist, RIHPHC*

Revolutionary War sites survive on Bristol Peninsula, on Aquidneck Island, in Tiverton, and in the waters of Narragansett Bay. Compare historic narratives and maps with the physical evidence at earthworks, structures, battlefields, and shipwrecks. The tour will include Fort Butts, Fort Barton, and sites associated with the Battle of Rhode Island. Be prepared for a moderately strenuous tour with steep hills.

B9 Bristol Farms and Estates Tour*

DEPARTS On bus outside Andrews School

Joan Roth, *Past President, Linden Place*

With its fertile soil and scenic waterfront, the Bristol Peninsula has been an appealing location for farms and country estates for more than three centuries. This tour will visit Coggeshall Farm (an 18th-century farm), Colt State Park (on the grounds of the Colt estate), Blithewold (a turn-of-the-century estate with extensive gardens), and Mount Hope Farm (crowned by the 1745 Governor Bradford House). Witness how individual families made their mark on the landscape, and discover how these great places are preserved today.

B10 On the Waterfront: Dynamic Warren Tour*

DEPARTS On bus outside Andrews School

Wm McKenzie Woodward, *Architectural Historian, RIHPHC*

With the state's most active historic working waterfront, a lively central business district, hand-somely rehabilitated public buildings, and fine examples of 19th-century domestic architecture, Warren's Waterfront Historic District presents remarkable diversity in a densely built environment. The walking tour of this recently expanded National Register district will focus on long-appreciated historic buildings, recent discoveries of significant commercial and industrial designs, and the wide variety of current preservation activity.

C1 Historic Schools: ABCs of Planning and Community Issues

SITE Bristol Statehouse, 240 High St

Celeste Bilotti, *Education Finance Officer, RI Department of Elementary and Secondary Education*

David Gordon, *Chairman, Newport School Board*

Edward P. Mara, *Superintendent of Schools, Bristol-Warren Regional School District*

Ted Sanderson, *Executive Director, RIHPHC*

Scott Wolf, *Executive Director, Grow Smart Rhode Island*

For most communities, nothing is more important or more expensive than their public schools. This panel discussion will examine issues that every community must address in planning for excellent schools while also preserving vibrant residential neighborhoods and attempting to make smart decisions about how the community grows. Hear about the future of Bristol's historic schools; learn about State requirements and funding; consider how school decisions impact community growth; and learn from Newport's successful rehabilitation of Thompson Middle School.

C2 Historic Schools: "The Best Possible Accommodations:" An Architectural History of Rhode Island Schools

SITE Burnside Building, 400 Hope St

Robert O. Jones, *Architectural Historian, RIHPHC*

Rhode Island's tremendous population growth at the time of its greatest prosperity left a splendid legacy of 19th- and early 20th-century school buildings. As post-World War II schools near or surpass the 50-year mark, they merit serious evaluation of their own distinctive architectural characteristics. Whether you think they're obsolete or adaptable, schools represent one of the most consistently threatened classes of historic

buildings. Join this presentation of the wide array of types and styles of structures in which Rhode Island children have gone to school for the last 250 years.

C3 Window Workshop II: Replacing Historic Windows

SITE Pastime Theater, 91 Bradford St

Dennis Albert, *Chairman, Cranston Historic District Commission*

Lynn Furney, *Associate Planner, City of Cranston*

Virginia Hesse, *Principal Historic Architect, RIHPHC*

Alec MacLeod, *Owner & Principal, Alec MacLeod Fine Woodworking*

Bob Rose, *Architectural Services Representative, Horner Woodworking*

In Window Workshop II, learn about when it is necessary to replace historic sash and what appropriate options are available. *Prerequisite: B3 Window Workshop I.*

C4 State Preservation Grants: Recent Projects and Upcoming Applications

SITE Bristol Historical & Preservation Society, 48 Court St

Lynne Collinson, *Managing Director, 2nd Story Theatre (Warren)*

Derwent "Derry" Riding, *President, Bristol Historical & Preservation Society*

Sarah Zurier, *Special Projects Coordinator, RIHPHC*

In 2003, the RIHPHC awarded \$1.5 million in State Preservation Grants to 26 museums and arts facilities. A second \$1.5 million grant round is scheduled for 2004. Join us at the Former Bristol County Jail (an SPG site) to hear about recent projects, and pick

up tips for submitting an application in the upcoming grant round.

C5 Herreshoff Marine Museum: Walking Tour

DEPARTS On bus outside Andrews School

John Palmieri, *Curator, Herreshoff Marine Museum*

Sail back to the "Golden Age of Yachting" with a visit to the Museum, located at the site of the world-famous Herreshoff Manufacturing Company. View sailing and power yachts built between 1859 and 1945, together with photographs and yachting memorabilia. Hear about the latest preservation projects, both for yachts and for buildings, as well as plans for new construction on the property.

C6 Crown Jewel of Bristol: Linden Place Walking Tour

DEPARTS On foot outside Andrews School

Staff, *Linden Place*

Walk through the iron gates, pass the bronze sculptures, and step into this elaborate Federal period mansion designed by architect Russell Warren in 1810. Built for the merchant George D'Wolf and passed down to the Colt family, Linden Place is open to the public thanks to a \$1.5 million bond passed by Rhode Island voters in 1988. This tour will explore the architecture, furnishings, and intriguing family histories of Linden Place.

Closing Reception takes place at the Herreshoff Marine Museum, One Burnside St. You can catch a ride via shuttle bus on Hope St.

Co-hosted by *Preserve Rhode Island, Bristol Historical & Preservation Society, and The Historic Collaborative.*

Sponsors



State of Rhode Island
Historical Preservation & Heritage Commission



AIA/RHODE ISLAND
A Chapter of The American Institute of Architects



preserve
RHODE ISLAND

Roger Williams University
SCHOOL OF ARCHITECTURE,
ART AND HISTORIC PRESERVATION

 *Bristol Harbor Inn*
AT THAMES STREET LANDING

**DURKEE BROWN
VIVEIROS & WERENFELS**
ARCHITECTS


RISING SUN MILLS

 **CORNISH**
ASSOCIATES

Gilbane

 **the Foundry**
CORPORATE
OFFICE
CENTER

**RIVERFRONT
LOFTS**


HOTEL providence

T · H · C

**THE HISTORIC
COLLABORATIVE**


**Newport
Collaborative
Architects, Inc.**

**P
A
L** *Cultural
Resource
Management
Professionals*

Rhode Island Historical Preservation & Heritage Commission

The Rhode Island Historical Preservation & Heritage Commission is the state agency for historical preservation and heritage programs. The Commission operates a statewide historical preservation program that identifies and protects historic resources, and it carries out programs to document and celebrate the rich cultural heritage of Rhode Island's people.

National Park Service

The National Park Service is the federal leader in preserving America's heritage. In addition to operating the national parks and national historic sites, NPS maintains the National Register of Historic Places and works with State Historic Preservation offices to carry out the responsibilities of the National Historic Preservation Act.

Town of Bristol

The Town of Bristol was founded in 1680 as a settlement of Plymouth Colony and awarded to Rhode Island in 1744. As a result of the Town's commitment to preservation, its tree-lined streets and picturesque waterfront are known for their remarkable historic buildings and scenic natural areas.

Bristol Historical & Preservation Society

The Bristol Historical & Preservation Society was founded in 1936 to promote historical research of Bristol and to collect and preserve materials related to the Town's heritage. From its headquarters in the old 1828 Bristol County Jail, the Society operates a museum and library and sponsors events throughout the year.

American Institute of Architects/Rhode Island

Founded in 1875, the seventh oldest chapter of the American Institute of Architects, AIA/Rhode Island is a professional association representing nearly 200 professionals and 50 affiliate members. The AIA continues to strive for quality, consistency, and safety in the built environment and to serve as the voice of the architecture profession.

Preserve Rhode Island

Chartered in 1956, Preserve Rhode Island is the statewide non-profit historic preservation organization working to preserve the heritage of Rhode Island by promoting the maintenance or adaptive reuse of historic and significant structures and sites, the protection of scenic landscapes, and the character of neighborhoods.

Roger Williams University School of Architecture, Art and Historic Preservation

The Roger Williams University School of Architecture, Art and Historic Preservation is a diverse community of students and faculty dedicated to the creation and stewardship of the built and cultural environments. RWU faculty, alumni, and students are important contributors to the work of historic preservation in Rhode Island.

Armory Revival Company Rising Sun Mills

For 18 years, Providence-based Armory Revival Company has been a leader in building strong neighborhoods and in rehabilitating historic properties for offices, retail, and housing. Armory Revival and partner Struever Bros. Eccles & Rouse are currently collaborating on the \$56 million mixed-use redevelopment of the 313,000 square foot Rising Sun Mills (1887) in Providence.

Cornish Associates Malcolm G. Chace

Cornish Associates is a specialized real estate development company dedicated to the principles of New Urbanism and responsible development practices. With seven rehab projects creating 208 apartments, Cornish is making a substantial commitment to the ongoing revitalization of Downtown Providence.

Durkee, Brown Viveiros & Werenfels Architects

Founded in 1994, Durkee, Brown, Viveiros & Werenfels Architects, Inc. is an award-winning architectural firm located in Providence. The firm's broad range of projects includes a long list of historic rehabilitation projects as well as design of commercial and institutional buildings, the creation of affordable, neighborhood housing, and the design of private residences.

Foundry Corporate Office Center

After Brown & Sharpe closed its factories on Promenade Street in Providence, the Foundry Corporate Office Center converted eight buildings in the historic complex into almost 500,000 square feet of office space. Today the Foundry Corporate Office Center is transforming three additional long-vacant buildings into 220 luxury apartments totaling 300,000 square feet.

Gilbane, Inc.

Gilbane, Inc., a private holding company, shares common family ownership and management, delivering construction and development services to customers through its subsidiary companies — Gilbane Building Company and Gilbane Properties, Inc.

Newport Collaborative Architects

Newport Collaborative Architects, founded in 1981, is the largest architectural firm in Rhode Island and has received 48 awards for historic restoration and innovative new construction projects. Newport Collaborative Architects specializes in historic rehabilitation, adaptive reuse, and the design of educational facilities, hotels and resorts.

Riverfront Lofts, Pawtucket

Located in the heart of Pawtucket's rapidly growing Arts and Entertainment District, Riverfront Lofts is a vibrant new community of artists and those who love the arts. The dramatic rehabilitation of the historic Lebanon Mills (1901) into 60 live/work lofts will be complete in spring 2004.

Stanley Weiss Associates The Hotel Providence

Operating from the former Tilden-Thurber Building (1895), Stanley Weiss is a pioneer in the renewal of Downtown Providence. In 1998, he completed the award-winning rehabilitation of the Fletcher Building (1893). His current project is the restoration of the Lederer Building (1897) to its original turn-of-the-century beauty for The Hotel Providence, an 80-room boutique hotel.

Struever Bros., Eccles, & Rouse Rising Sun Mills

Established in 1974, Baltimore-based Struever Bros. Eccles & Rouse, Inc. has a longstanding, successful record as an urban development and construction company specializing in historic adaptive reuse. SBE&R has developed more than 10 million square feet of commercial, residential, and retail space. SBE&R is collaborating with the Armory Revival Company on the Rising Sun Mills (1887) in Providence.

Thames Street Landing

Located on Bristol's waterfront, Thames Street Landing is a complex of renovated historic buildings and new construction that houses shops, restaurants, offices, and the Bristol Harbor Inn. In 2003, the Environmental Protection Agency presented the Phoenix Award for Region 1 to Thames Street Landing in recognition of excellence in brownfields redevelopment.

The Historic Collaborative

Based in Bristol, The Historic Collaborative is a full-service architectural and preservation consulting firm that provides integrated services in the disciplines of design, planning, development, land use, and historic resource protection.

The Public Archaeology Laboratory

The Public Archaeology Laboratory is New England's leading consultant firm in cultural resource management and specializes in terrestrial and marine archaeology, architectural history, research and documentation, and preservation planning.

Thank You

Sponsored by

Rhode Island Historical
Preservation & Heritage
Commission

National Park Service

Town of Bristol

Bristol Historical &
Preservation Society

American Institute of
Architects/Rhode Island

Preserve Rhode Island

Roger Williams University
School of Architecture, Art and
Historic Preservation

Armory Revival Company
Rising Sun Mills

Cornish Associates
Malcolm G. Chace

Durkee, Brown, Viveiros, &
Werenfels Architects

Foundry Corporate
Office Center

Gilbane, Inc.

National Park Service

Newport Collaborative
Architects

Riverfront Lofts, Pawtucket

Stanley Weiss Associates
The Hotel Providence

Struever Bros., Eccles, & Rouse
Rising Sun Mills

Thames Street Landing

The Historic Collaborative

The Public Archaeology
Laboratory

Bristol Bagel Works

East Bay Chamber of Commerce

Leo's Ristorante

In cooperation with

Alec MacLeod Fine
Woodworking

Architectural Conservation
Services

Blithewold Mansion,
Gardens and Arboretum

Bristol Harbor Inn

Bristol Statehouse Foundation

Bristol Train of Artillery

Bristol-Warren Regional
School District

City of Cranston

City of Newport

Coggeshall Farm Museum

Consigli Construction Co. Inc.

Finegold Alexander + Associates

Grow Smart Rhode Island

HMFH Architects

Haffenreffer Museum of
Anthropology

Heritage Restoration, Inc.

Herreshoff Marine Museum

Hive Archive

Hope Valley Elementary School

Hornbine School

Horner Woodworking

Lerner | Ladds + Bartels

Linden Place

Lombard John Pozzi Architect

Massasoit Historical Association

Mosaico Community
Development Corporation

Mount Hope Farm

Mount Hope High School
Brass Quintet

National Trust for Historic
Preservation

Pastime Theater Foundation

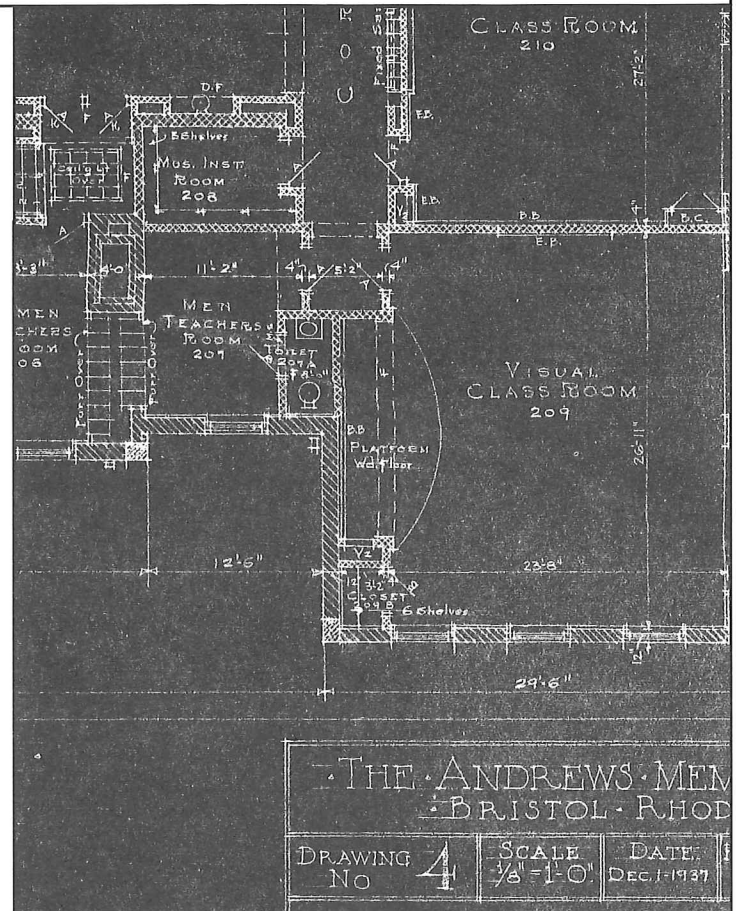
Paul Cuffee School

Pawlowski Associates

PreservatiON MASS

Preservation Training and
Education Institute

Rhode Island College



Rhode Island Council for
the Humanities

Rhode Island Department
of Elementary and Secondary
Education

Rhode Island Department of
Transportation

Rhode Island Marine
Archaeology Project

Rhode Island State Council
on the Arts

Salve Regina University

Save Our Schools (Bristol)

Save Our Small Schools
(Tiverton)

2nd Story Theatre

Society for the Preservation of
New England Antiquities

Southside Broad Street

Stadium Theatre Foundation

University of Rhode Island

Volunteer Center of
Rhode Island

This publication was financed in part
with a Federal grant administered by
the Rhode Island Historical
Preservation and Heritage
Commission, which receives federal
funds from the National Park Service,
US Department of the Interior.
However, the contents and opinions
do not necessarily reflect the views or
policies of the Department of the
Interior.

Regulations of the US Department of
Interior strictly prohibit discrimina-
tion in departmental Federally assist-
ed programs on the basis of race,
color, national origin, disability or age
in its federally assisted programs. Any
person who believes he or she has
been discriminated against in any pro-
gram, activity, or facility as described
above, please write to Office of Equal
Opportunity, US Department of the
Interior, National Park Service, 1201
Eye Street NW, 6th Floor, Washington,
DC 20005.