

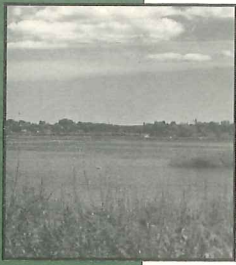
PRESERVING
PLACE
GROWING
SMART



SATURDAY · APRIL 12, 1997
University of Rhode Island · Kingston RI

A MAJOR STATEWIDE CONFERENCE FOR:

Preservationists, Environmentalists, Housing and Transportation Advocates, Concerned Citizens, Community Planners, Architects, Landscape Architects, Historic District Commissions, Planning Boards, Zoning Boards, Land Trusts, Public Officials, Business Leaders, Educators and Students



Many Rhode Islanders have concerns about the way our state is changing . . .

- Some of us regret the steady loss of open spaces and farmlands which contribute so much to Rhode Island's historic character and scenic beauty;
- Some fear that run-off from new roads and parking lots will stop the progress we've made in cleaning up Narragansett Bay;
- Others wonder how our traditional village Main Streets can compete with malls and super-stores;
- Some question whether we really have to give up our stone walls and trees to have safe roads;
- Others worry that business and residential construction in outlying towns drains the vitality of our cities ~ and that Rhode Island's economy can never be healthy if our urban centers are dying.

Can Rhode Island's future development be planned to preserve our physical resources and to promote the well-being of the total community? Our individual concerns ~ historic preservation, conservation, transportation, housing, economic development ~ are all linked together as parts of that question. We cannot address any one concern effectively if we do not deal with all the concerns together.

The conference sponsors believe that our various constituencies should join forces on this issue and call for statewide attention and action.

Join us in Kingston on Saturday, April 12. The conference presents a unique opportunity to hear nationally recognized experts; increase your understanding of the issues and how they interrelate; discuss strategies which have worked successfully in other states; and establish contacts with other concerned Rhode Islanders.

ADVANCE REGISTRATION REQUIRED BY APRIL 4

CONFERENCE STEERING COMMITTEE

The Dunn Foundation
Providence Foundation
Providence Preservation Society
Rhode Island Historical Preservation & Heritage Commission
Rhode Island Housing & Mortgage Finance Corporation
Save The Bay
South County Regional Transportation Initiative
Town of South Kingstown and South Kingstown Historic District Commission

PRESERVING PLACE ~ GROWING SMART

is funded through grants from:

The Dunn Foundation
The National Trust For Historic Preservation
The Rhode Island Foundation
The Rhode Island Historical Preservation & Heritage Commission

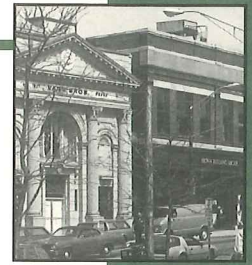
The conference sponsors gratefully acknowledge the University of Rhode Island for donating the conference facilities.

Growing Smart is a service mark of the Environmental League of Massachusetts.

AGENDA

- 8:00-9:00 AM REGISTRATION AND COFFEE**
Edwards Auditorium
- 9:00-9:30 AM WELCOMING REMARKS**
Edward F. Sanderson, Executive Director
RI Historical Preservation & Heritage
Commission speaking for the Conference
Steering Committee
Robert L. Carothers, Ph.D.,
President, University of Rhode Island
Governor Lincoln Almond
- 9:30-10:10 AM KEYNOTE ADDRESS: PRESERVING PLACE**
Edward T. McMahon, Director of the
American Greenways Program
The Conservation Fund
- 10:10-11:10 AM PANEL DISCUSSION: GROWING SMART**
See panel participants below
- 11:10-11:30 AM COFFEE BREAK**
- 11:30-12:30 PM RHODE ISLAND TOWN MEETING**
*Join Moderator Jim Taricani for a lively
exchange of questions and opinions
between panelists and the audience.*
OR...
WALKING TOUR OF KINGSTOWN VILLAGE

- 12:30 - 1:30 LUNCH**
Memorial Union
*To accommodate the large audience
anticipated, two lunch options in
different locations are offered.
The same menu will be served at both
lunches.*
**1997 STATE HISTORIC PRESERVATION
AWARDS LUNCHEON**
OR...
OPEN LUNCHEON ~ No Formal Program
- 1:30-2:50 PM FIRST AFTERNOON SESSIONS**
(See descriptions on following pages.)
- 3:10-4:30 PM SECOND AFTERNOON SESSIONS**
(See descriptions on following pages.)
- 4:30-6:00 PM WRAP-UP SESSION:
WHERE DO WE GO FROM HERE?
FOLLOWED BY CLOSING RECEPTION**
Memorial Union Ballroom



ABOUT THE MORNING SPEAKERS

KEYNOTE SPEAKER:

EDWARD T. MCMAHON is an articulate critic of unplanned sprawl development. A land-use planner and attorney, he currently directs the American Greenways Program at The Conservation Fund. McMahon co-founded Scenic America, a national non-profit organization devoted to protecting America's scenic landscapes; has authored eight books; and has written and spoken widely on the topics of conservation, land use planning, historic preservation and tourism.

PANEL MEMBERS:

CONSTANCE E. BEAUMONT, the National Trust for Historic Preservation's Director for State and Local Policy, has written extensively about public policies affecting historic preservation, land use, urban planning, growth management and transportation. Her latest book *Smart States, Better Communities* examines policy options for state governments interested in preserving historic cities and towns and making them more livable.

TRUDY COXE, Environmental Affairs Secretary for the Commonwealth of Massachusetts, is one of America's foremost environmental advocates. During 11 years as Executive Director, she turned Save The Bay into one of New England's largest citizen action organizations. In her current post she leads five key agencies; her responsibilities range from land acquisition and the management of the nation's sixth largest parks system to enforcement of federal and state environmental laws.

DOUGLAS I. FOY, during 20 years as President of the Conservation Law Foundation, has developed the CLF from a small conservation group into a dynamic regional environmental law organization known internationally for innovative approaches to controversial issues. Foy has helped shape environmental policy in transportation planning, water and air pollution, marine resources, and public health.

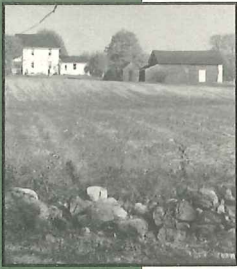
SALLY ROMAN coordinates Housing and Public Information for the Montgomery County, Maryland, Department of Park and Planning. Following a long-standing public policy commitment to growth management and the long-term interest of the larger community, Montgomery County has produced one of the most innovative and effective affordable housing programs in the country.

ROBERT D. YARO, a pioneer in planning approaches for managed development and small-town preservation, serves as Executive Director of the Regional Plan Association, America's oldest and most distinguished independent metropolitan research and advocacy group. In 1996, he co-authored the RPA's latest report *A Region At Risk*. A founding Director of the Center for Rural Massachusetts, he also co-authored the award-winning book *Dealing with Change in the Connecticut River Valley*.

MODERATOR: JIM TARICANI. During 18 years as an investigative reporter for WJAR Channel 10-NBC, Jim Taricani has used insightful questioning to help Rhode Islanders analyze and understand many complex issues. Taricani served as press secretary to Governor Lincoln Almond for a year and a half in 1995 and 1996.

SATURDAY, APRIL 12, 1997

PRESERVING PLACE ~ GROWING SMART



ALL-AFTERNOON BUS TOUR ~ 1:30 - 4:30 PM

THE FARMS OF SOUTH COUNTY

Susan Sosnowski, Sosnowski Farm
Myron Stachiw, Society for the Preservation of New England Antiquities

Appreciate southern Rhode Island's historically rural character and increase your understanding of the development pressures facing working farms today on a tour of South County's agricultural areas. Visit a 200-year old farm still in private ownership and SPNEA's 1725 Casey Farm.

FIRST AFTERNOON SESSIONS 1:30 - 2:50 PM

A1 SAVING OPEN SPACE: PLANNING AND DESIGN STRATEGIES THAT CAN WORK FOR RHODE ISLAND

Moderator: Rolf Pendall, Associate Professor, Community Planning and Area Development, URI
Armando Carbonell, Cape Cod Commission
Richard C. Youngken, Planning Director, Newport Collaborative Architects, Inc.
Sally Roman, Montgomery County, Department of Park and Planning
Dodson Associates

When farmlands and other open spaces are developed for housing or commercial purposes, innovative planning and design strategies can conserve open land and forests and protect scenic views, wetlands and water resources. Learn about these strategies ~ how they work and what is needed to implement them successfully.

A2 REVITALIZING VILLAGE CENTERS AND MAIN STREETS

Moderator: Linda Ozga, Westerly-Pawcatuck Downtown Coordinator
Constance Beaumont, National Trust for Historic Preservation
Kathy LaPlante, State Coordinator, New Hampshire Main Street Program
Gerhard Oswald, Director of Community Development, Town of Bristol
Kevin Munroe, Architect

Rhode Island's historic villages can continue to be appealing places to live and do business. Hear about design and marketing strategies to revitalize village centers and help Main Street merchants compete with shopping centers and mega-stores. Share your thoughts about the challenge of balancing requests for drive-throughs and additional parking with the need to protect village character.

A3 GROWING TOURISM WITHOUT GROWING PAINS

Moderator: David DePetrillo, Director, Tourism Division, R.I. Economic Development Corporation
Barbara Barnes, Tourism Coordinator, Providence Preservation Society
Ann O'Neill, President, South County Tourism Council
Karen Peterson, Davidson-Peterson Associates, Tourism Consultants, York, Maine
Keith Stokes, Executive Director, Newport County Chamber of Commerce

Expanded tourism can bring economic revitalization. It can also bring new development and increased traffic which damage the historic community character and natural resources treasured by local residents and sought by visitors. How do we reap the benefits while avoiding the pitfalls?

A4 NEW HOUSING FROM OLD BUILDINGS

Moderator: Susan Bodington, Assistant Director of Policy & Development, RIHMFC
Joseph Garlick, Executive Director, Woonsocket Neighborhood Development Corporation
Alan Berry, Berry/Lykins Architects, Architect for the Bristol Foundation
Stephen Ostiguy, Executive Director, Church Community Housing Corporation

Community development agencies and developers have successfully re-used historic mills, schools and large single-family residences to create affordable housing. Representatives from several projects will provide details about both design and financing.

A5 MAKING THE CONNECTION: TRANSPORTATION, LAND USE, AND YOUR COMMUNITY

Moderator: Daniel Baudouin, Executive Director, Providence Foundation
Steven Burrington, Conservation Law Foundation
William Constable, President, Massachusetts Association of Planning Councils

Transportation planning choices can protect or destroy a community's character and have a major impact on air and water quality. Hear transportation experts discuss how road/highway design can be more responsive to local concerns, the importance of mass transit to livable communities, and how to ensure citizen participation in the planning process. Concerned citizens, community transportation advocates and transportation officials and planners are encouraged to join this discussion.

A6 "THE CITY SPREAD OUT THINLY": THE CHANGING CHARACTER OF SUBURBAN DEVELOPMENT 1840-2000

Robert Owen Jones, Architectural Historian, RIHP&HC

Suburbanization is commonly seen as a post-World War II phenomenon, but the forces which have driven and shaped it have been in place for at least 150 years. How have the forms and philosophy of suburbanization changed over time, and can lessons from the past serve to guide future growth?

A7 "A LEGACY IN STONE": WALKING TOUR OF PEACE DALE

Clifford Renshaw, Architect
Sarah P. Turnbaugh, Museum Director, and
Leslie Wolken, Program Assistant, Museum of Primitive Art & Culture

Travel by bus to Peace Dale and discover the mill village's beauty and unique state of preservation with local experts. Enjoy a walking tour of the handsome public buildings, parks, mill complex, and housing which reflect the village's evolution from the late 1700s to the present.

2 SECOND AFTERNOON SESSIONS 3:10 - 4:30 PM

B1 SAVING FARMLANDS AND OPEN SPACE: FINANCIAL STRATEGIES

Moderator: Judith Benedict, Director of Land Acquisition, Rhode Island Field Office of The Nature Conservancy
Armando Carbonell, Executive Director, Cape Cod Commission
Jeffrey S. Larson, Regional Attorney, The Nature Conservancy
Lisa Pointek, Land Conservation Supervisor, RI Department of Environmental Management

Town governments and public/private land trusts can use various financial strategies to preserve open space while meeting the financial goals of landowners. Learn about innovative techniques used successfully in other states, as well as approaches already proven in Rhode Island, and discuss the political realities of passing necessary enabling legislation. The workshop will also provide information about sources of funding for land acquisition.

B2 THE ECONOMICS OF SPRAWL

Moderator: Samuel S. Reid, Policy Advisor, Office of the Governor
Peter Marino, Director of Policy & Municipal Affairs, RIPEC
Trudy Cox, Environmental Affairs Secretary, Commonwealth of Massachusetts
Robert Yaro, Executive Director, Regional Plan Association

What are the real costs of low-density development in outlying areas and how are those costs currently subsidized? Who pays for the expenses associated with urban decline and environmental pollution? Why is revenue sharing a key element of a regional planning approach for future development? Increase your understanding of these complex questions.

B3 B&B'S FROM ARCHITECTURE TO ZONING

Moderator: Derwent Riding, Principal Planner, RI Office of Municipal Affairs
Susan Adams, Proprietor, Bradford-Diamond-Norris House, Bristol
Virginia Hesse, Preservation Architect, RIHP&HC
Representative, State Fire Marshall's Office (invited)
Karen Peterson, Davidson-Peterson Associates, Tourism Consultants, York, Maine

B&Bs can be an ideal way to accommodate expanding tourism demands and reuse large historic residences no longer viable as single-family homes. If you've ever wondered whether B&Bs might be assets for your town, don't miss this introduction to zoning and code issues, appropriate architectural adaptation, and financing.

B4 HISTORIC DISTRICT ZONING IN RHODE ISLAND

Moderator: Pamela Kennedy, RIHP&HC
David Andreozzi, Chair, Bristol HDC
Alexander Scott, Co-Chair, Warren HD Study Commission
Carolyn Sheehan, Former Chair of Central Falls HDC

As historic district zoning in Rhode Island enters its fifth decade, many HDCs are dealing with conflicting community interests. Examples include a recent Bristol court case, Warren's effort to craft historic-district-zoning guidelines which can win community support, and the abolition of historic district zoning in Woonsocket and Central Falls. Join your fellow HDC members from around the state in a free-wheeling discussion of the current challenges facing RI HDCs.

B5 PROJECTS IN THE PIPELINE

Moderator: Paul Pawlowski, Vision Rhode Island
Matthew Alexander, North Stonington Town Planner
Katherine Trapani, AICP, Principal Planner, RIEDC - Quonset Davisville Division
Marilyn Cohen, Town Planner, Town of North Kingstown
Nancy L. Brittain, Community Planner, Blackstone River Valley National Heritage Corridor Commission

Get the latest information on impending projects which could greatly alter the character of three different RI areas. What are the current plans for the proposed theme park in North Stonington, CT; development of Quonset; and the hook-up of Route 146 with the Mass Pike? Are RI towns prepared to deal with the increased development pressures?



B6 THE SALT PONDS OF SOUTH COUNTY

Moderator: David Monk, President, Salt Ponds Coalition
Paul Robinson, Ph.D., Principal Archaeologist, RIHP&HC
Representative, Coastal Resources Management Council

South County's Salt Pond area, a fragile and irreplaceable environmental and archaeological resource, is threatened by development pressures. It provides an ideal case study to demonstrate the importance of a regional planning approach and to illustrate ways to protect environmental and cultural resources.

B7 WALKING TOUR OF KINGSTON VILLAGE

Gilbert Indeglia, Village Resident
Cecilia Boggs, Executive Director, Pettaquamscutt Historical Society
Raymond O'Neil, Kingston Improvement Association

The cultural and professional center for South County's prosperous 18th c. plantation economy and a county seat for 115 years, Kingston Village has remained virtually intact: three-quarters of the structures within the historic district predate 1840. Tour R.I.'s first locally designated historic district with local preservationists and visit several historic buildings.



SATURDAY, APRIL 12, 1997

PRESERVING PLACE ~ GROWING SMART

Providence Preservation Society
21 Meeting Street
Providence, RI 02903

NON-PROFIT ORG.
U.S. POSTAGE
PAID
PROVIDENCE, RI
PERMIT NO. 229

Conference Steering Committee

The Dunn Foundation
Providence Foundation
Providence Preservation Society
Rhode Island Historical Preservation &
Heritage Commission
Rhode Island Housing & Mortgage Finance
Corporation
Save The Bay
South County Regional Transportation Initiative
Town of South Kingstown and South Kingstown
Historic District Commission

The conference is funded in part by a Certified Local Government grant administered by the R.I. Historical Preservation & Heritage Commission to the Town of South Kingstown. The RIHP&HC Certified Local Government program receives federal funds from the U.S. Department of the Interior, National Park Service. The contents and opinions contained herein do not necessarily reflect the views or policies of the Department of the Interior. Regulations of the Department of the Interior strictly prohibit unlawful discrimination in departmental federally assisted programs on the basis of race, color, national origin, age, or handicap. Any person who believes he or she has been discriminated against in any program, activity or facility operated by a recipient of federal assistance should write to: Director, Equal Opportunity Program, U.S. Department of the Interior, National Park Service, P.O. Box 37127, Washington, D.C. 20013-37127.



Thanks to the following government agencies and non-profit organizations for providing speakers and/or helping to publicize this conference:

Advisory Council on Trees (ACT) for South Kingstown
Blackstone River Valley National Heritage Corridor
Commission
Bristol Historic District Commission
Cape Cod Commission
Conservation Law Foundation
Kingston Improvement Association
League of Rhode Island Historical Societies
Museum of Primitive Art & Culture
The National Trust for Historic Preservation
The Nature Conservancy
Newport County Chamber of Commerce
Office of The Governor
Pettaquamscutt Historical Society, Inc.
RI Chapter/American Planning Association
RI Chapter/American Society of Landscape Architects
RI Coastal Resources Management Council
RI Dept. of Administration ~ Statewide Planning &
Municipal Affairs

RIDEM
RIDOT
RIEDC — Tourism and Quonset-Davisville Divisions
RI Greenways Council
RIPEC
Roger Williams University Center for Historic
Preservation
Salt Pond Coalition
Saugatucket River Heritage Corridor Coalition, Inc.
South County Art Association
South County Tourism Council
South Kingstown Housing Authority
South Kingstown Neighborhood Congress, Inc.
Town of North Kingstown
University of Rhode Island
USEPA
Warren Rhode Island
Warren Historic District Study Commission
Woonsocket Neighborhood Development Corporation

Cover: Wilcox Bldg., courtesy the City of Providence; all other photos are RIHP & HC
Brochure Design: Images Design Company, Wakefield, RI

Various mailing lists are used to publicize the conference. If you receive more than one copy of this brochure, please pass it on to a friend or colleague.