

The 15th Annual
Rhode Island Statewide
Historic Preservation Conference

**PRESERVING OUR
CULTURAL HERITAGE:**

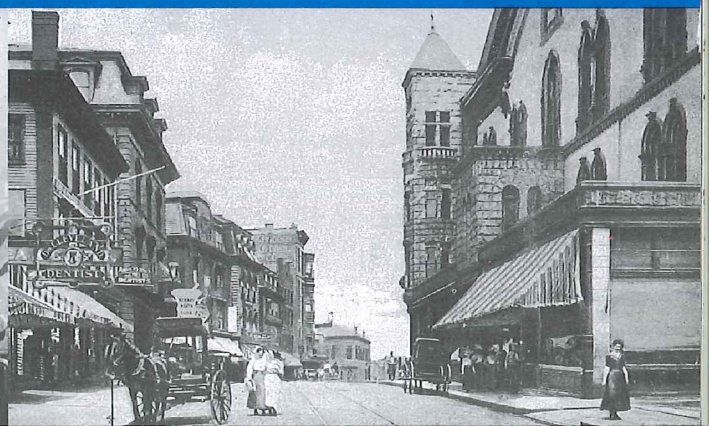
THE MEANING OF PLACE AND CULTURE

Saturday, April 8, 2000

Slatersville & Woonsocket, Rhode Island

Sponsored by:

- The Rhode Island Historical Preservation & Heritage Commission •
- John H. Chafee Blackstone River Valley National Heritage Corridor Commission •
- City of Woonsocket • Grow Smart Rhode Island • Heritage Harbor Museum •
- Main Street Rhode Island • Massachusetts Historical Commission •
- Museum of Work & Culture • National Trust for Historic Preservation •
- North Smithfield Heritage Association • North Smithfield Historic District Commission •
- Preserve Rhode Island • Stadium Theatre Foundation • Town of North Smithfield •
- Roger Williams University School of Architecture, Historic Preservation Program •



PRESERVING OUR CULTURAL HERITAGE

THE MEANING OF PLACE & CULTURE

The Blackstone Valley, birthplace of the American Industrial Revolution, embodies a unique intersection of place and culture. This heritage is a direct reflection of the people who have lived and worked there through the centuries, the architecture they have produced, and the influence of the natural environs. This rich legacy is especially challenging to preserve in a time when homogenization and the pressures of modern life threaten to rob communities of the identity that makes them unique and appealing.

Come join us for the 2000 Statewide Historic Preservation Conference where the intersection of place and culture is reflected in the rich history of the Blackstone River Valley, birthplace of the American Industrial Revolution.

CONFERENCE AGENDA

8:00-9:00 a.m.	REGISTRATION <i>Stadium Theatre, Woonsocket</i>	12:30-1:30 p.m.	LUNCH <i>Slatersville or Woonsocket</i>
9:00-10:40 a.m.	WELCOMING REMARKS KEYNOTE ADDRESS: <i>CHARACTER AND PLACE</i> Roger G. Kennedy 2000 STATE HISTORIC PRESERVATION AWARDS	1:30-3:00 p.m.	1 st AFTERNOON SESSIONS <i>Slatersville or Woonsocket</i>
10:40-11:00 a.m.	COFFEE BREAK	3:00-3:30 p.m.	BREAK
11:00-12:30 p.m.	MORNING SESSIONS <i>Woonsocket</i>	3:30-5:00 p.m.	2 nd AFTERNOON SESSIONS <i>Slatersville or Woonsocket</i>
		5:00-6:00 p.m.	CLOSING RECEPTION <i>Museum of Work & Culture, Woonsocket</i>

Shuttle service will be provided throughout the day between the various locations of the conference. Please note that lunch will be served in the location of your afternoon sessions.

Keynote speaker ROGER G. KENNEDY, an historian, author, lawyer, correspondent, and television series host, has served as Director of the National Park Service, Director of the Smithsonian's National Museum of American History, and Vice President, Finance, of the Ford Foundation.

Mr. Kennedy has also served presidents from Eisenhower to Bush in the Departments of Justice, Labor, Interior, and Health, Education & Welfare. The author of nine books, he has written extensively on architecture and history, has appeared in his own series on the Discovery Channel, and was a White House correspondent for NBC. He holds a BA from Yale and an LLD from the University of Minnesota Law School.

Mr. Kennedy lives in New Mexico with his wife, Frances, author, and noted Civil War battlefield preservationist.

Morning Sessions 11:00 a.m. - 12:30 p.m.

A1 DISCOVERING OUR CULTURAL HERITAGE (CH)

Dr. Charles Estus, Director of Community Studies Program, Assumption College, Worcester
Dr. Kevin E. Jordan, Professor of Historic Preservation, Roger Williams University
Robert L. Sherman, Program Specialist, Museum of Work & Culture
Learn from those who have discovered the cultural heritage of their community. Panelists will share how they have successfully researched and explored the forgotten and sometimes ignored cultural heritage of a community. A brief tour of the Museum of Work & Culture will follow.

A2 HISTORIC REHAB & PUBLIC SAFETY (GS)

Moderator: Daniel Baudouin, AICP, Executive Director, The Providence Foundation
J. Michael Abbott, AIA, Principal, The Newport Collaborative
Joseph Cerillo, Rhode Island State Building Commissioner (invited)
While Rhode Island's current building and fire codes discourage historic rehab projects, New Jersey's recent rehab code has contributed to a boom in rehabilitations. Learn more about the NJ model and current efforts to implement similar code reforms in RI in this panel.

A3 MEET THE DONORS (GI)

Moderator: Denise Panichas, President, Challenge Education Associates
Michael Creasey, Executive Director, Blackstone River Valley National Heritage Corridor Commission
Elsa Fitzgerald, Assistant Director, MHC
Pamela Kennedy, Deputy Director, RIHP&HC
Wendy Nicholas, Director, Northeast Regional Office, National Trust for Historic Preservation
Raising funds is a never-ending pursuit for most not-for-profit organizations. Listen in as a panel of representatives from various funding sources tell about their organizations, the impact they are trying to make, and what they look for in the projects they fund.

A4 COMPARING HDC's (GI)

Moderator: Luigi Bianco, Luigi Bianco Design Associates
Beverly Burgess, Chair, North Providence HDC
Gretchen Schuler, Preservation Planner
Christopher C. Skelly, Director of Local Government Programs, MHC
William McKenzie Woodward, Architectural Historian, RIHP&HC
This round table discussion will compare and contrast the models RI and MA use for their local Historic District Commissions. Join in the discussion as the panel explores topics such as the strengths and weakness's of each states' model and how they can be improved.

A5 OUR CULTURAL DIVERSITY (CH)

Jan Armstrong, Preservation Consultant
Scott Molloy, Associate Professor of Labor & Industrial Relations, URI
Red Sunset (Carole Jean Palavra), Research Assistant, Nipmuc Tribal Office

The cultural history of the Blackstone Valley is a mosaic of different peoples. Listen in as panelists present the history and experiences of the Native American, 19th-century immigrant, mill worker and African American populations.

A6 HOMEGROWN LANDMARKS (VA)

Richard Greenwood, Ph.D., Project Review Coordinator, RIHP&HC
Myron Stachiw, Architectural Historian, Colonial Williamsburg Foundation

The Blackstone River Valley is home to a number of distinctive building types, from the seventeenth-century stone-enders to the mill village of the Federal era and the three-decker of the industrial city. Learn how local builders blended folk tradition with innovation to produce these characteristic works of regional architecture.

A7 HIDDEN WOONSOCKET: WALKING TOUR (GI)

N. David Bouley, Historian
Woonsocket's North End became attractive as a suburban residential setting in the early 1900's, as the city experienced an expanding affluent middle class. Come explore this area of Woonsocket that reflects the architectural and planning conventions of it's era.

A8 ECCLESIASTIC BUILDINGS: WALKING TOUR (GI)

Robert O. Jones, Architectural Historian, RIHP&HC
The religious buildings of Woonsocket are the most visible manifestation of its community's diversity. This intriguing tour will explore the rich architectural and artistic legacy of that diversity.

A9 MAIN STREET 2000: WALKING TOUR (MS)

Nancy L. Brittain, Community Planner, Blackstone River Valley National Heritage Corridor Commission
Albert P. Valliere, Jr., President, Nation Wide Construction Corp.
This 1/2 mile walking tour of Woonsocket's Main Street will show the results behind the efforts of the Main Street 2000 program which has revitalized this downtown. See the positive effect of these efforts as tour guides share their insights as well as the strategies used in implementing this program.

A10 HISTORIC SLATERSVILLE: WALKING TOUR (GI, VA)

Louise Vanhouwe, North Smithfield Heritage Association
Slatersville is unique as not only the first planned industrial village in the United States but also as the site of a civic "improvements" plan initiated by the last owner of the entire village in the 1920's. See the results of these two efforts as you explore this unique mill village with guides from the North Smithfield Heritage Association.

A11 WOONSOCKET'S INDUSTRIAL DEVELOPMENT: WALKING TOUR (GI, VA)

Robert R. Bellerose, Historian & Author
Kevin Klyberg, Ranger, NPS

Explore the old, the new, and the in-between on this tour highlighting the landscape and industrial development that initiated the growth of Woonsocket. See first hand how the waters that started the wheels of industry are inspiring the preservation and restoration efforts of today.

First Afternoon Sessions 1:30-3:00 p.m.

PANEL SESSIONS - WOONSOCKET

NOTE: Lunch will be served in Woonsocket for those attending the following sessions identified with the Cultural Heritage (CH) track or the Main Street Program (MS) track.

B1 INTERPRETING PLACE AND CULTURE (CH)

*Keith W. Stokes, Executive Director, Newport County Chamber of Commerce,
Chuck Arning, Ranger, NPS
Linda Coombs, Associate Director, Wampanoag Indian Program, Plimoth Plantation*

What are the issues, and strategies of interpretation, especially when there is little or no physical evidence remaining of the people who were involved? Join panelists in exploring the process of developing and initiating an interpretive plan.

B2 HERITAGE PROGRAMS OF THE BLACKSTONE VALLEY (CH)

*Moderator: Sue Andrews, Chief Ranger, NPS
Russell Gusetti, Managing Director, Blackstone River Theatre
William Perry, Board Member, Waters Farm Preservation, Inc.
William D. Wallace, Executive Director, Worcester Historical Museum*

A wealth of heritage programs, and projects exist throughout the Blackstone River Valley. Learn about the Blackstone Valley Education Network, Waters Farm, Blackstone River Theatre, and the Worcester Historical Museum lecture series in this presentation that highlights but a few of the exciting programs and projects throughout the valley.

B3 REHAB ON A SHOESTRING (MS)

*Michael Abbott, AIA, Newport Collaborative Architects
Robert A. Lindfelt, TKS, Investment Corporation
Frederick Stachura, Projects Manager, Providence Preservation Society*

Numerous affordable ideas can be implemented that make a significant visual impact on downtown facades. Join an architect, planner, and property owner who have been directly involved in rehabilitation efforts, as they outline ideas and techniques used with a limited budget.

B4 RECRUITING & RETAINING BUSINESS IN HISTORIC DISTRICTS (MS)

*Moderator: Linda Ozga, Executive Director, Westerly-Pawcatuck Joint Development Task Force
Lori C. Adamo, Director of Economic Development, City of Woonsocket
Kirsten Means, Executive Director, Main Street Rhode Island Representative, Rhode Island Economic Redevelopment Corporation*

Learn about the basics of developing and strengthening your business base in this discussion panel. Panelists will share their insights in the fundamental steps necessary for implementing a business development plan.

PANEL SESSIONS - SLATERSVILLE

NOTE: Lunch will be served in Slatersville for those attending the following sessions identified with the Grow Smart (GS) track or the Vernacular Architecture (VA) track. Shuttle service will be available to Slatersville at the end of the morning sessions from 12:15 to 12:45 pm.

B5 SAVING OUR COMMERCIAL HERITAGE (VA, GS)

*Moderator: James Barnes AIA, James Barnes Architects
Nick Deane, Developer, Deane Redevelopment
William L. Kite AIA, Principal, William L. Kite Architects, Inc.*

Many of the commercial and industrial buildings throughout the New England area are threatened because of neglect, abandonment, or the possibility of demolition. What does it take to successfully recycle these structures? This round table discussion will investigate some of the key issues and strategies that can help or hinder the successful reuse of these buildings.

B6 THE BLACKSTONE RIVER - PAST, PRESENT & FUTURE (VA,GS)

*Moderator: Robert Sutton, RI Dept of Environmental Management
Michael D. Cassidy, Director of Planning & Redevelopment, City of Pawtucket
Johanna Hunter, River Navigator, American Heritage Rivers, EPA
Patrick Malone, Associate Professor, Urban Studies Program & American Civilization Dept, Brown University*

The waterpower of the Blackstone River gave birth to the industrial revolution in this country. Today these same waters are being utilized to give new life to the region. The river's past history as a power source, present revitalization efforts, and plans for future use will be presented in this session on the life force of the valley.

B7 PRESERVING HISTORIC CHARACTER BY GROWING SMART (GS)

Scott Wolf Executive Director, Grow Smart Rhode Island

Suburban sprawl erodes the vitality of our cities and towns, destroys traditional landscapes, and presents one of the greatest threats to New England's historic resources. Gain a broader understanding of why sprawl happens and the government policies and private decisions that can foster alternative "smart growth" approaches to development.

Key to session tracks:

CH - Cultural Heritage
GI - General Interest
GS - Grow Smart
MS - Main Street
VA - Vernacular Architecture

Afternoon Tours

TOURS

All tours will leave from the Stadium Theatre. Please note departure time for tours as some differ from listed session times.

Spaces for tours are limited to a total of 45 and will be filled in the order that registrations are received. The sponsors cannot guarantee that everyone who requests a tour will be accommodated.

B8 MODEL VILLAGES & COMPANY TOWNS: BUS TOUR (VA)

NOTE: 12:45 - 3:00, space limited to 45. Due to time constraints, lunch will be available on the bus. At the end of the tour, bus will return to both Slatersville and Woonsocket.

Richard Greenwood, Ph.D., Project Review Coordinator, RIHP&HC

The rural mill village made its first appearance in the United States in the Blackstone River Valley in 1806. Sample the breadth and variety of the 19th century mill village on a bus tour through the Blackstone and Woonasquatucket River Valleys.

B9 DISTINCTLY RHODE ISLAND: PRE-INDUSTRIAL VERNACULAR ARCHITECTURE: BUS TOUR (VA)

NOTE: 12:45 - 3:00, space limited to 45. Due to time constraints, lunch will be available on the bus. At the end of the tour, bus will return to both Slatersville and Woonsocket.

Myron O. Stachiw, Architectural Historian, Colonial Williamsburg Foundation
Briann Greenfield, Resident Overseer, Eleazer Arnold House, SPNEA

The distinctively local character of Rhode Island's earliest remaining buildings provides the framework for this tour. Explore the contribution early settlers in the Narragansett Basin made to the development of a distinctive architectural form in the 17th and 18th centuries - the stone-ender and the square plan house.

Cover images:

- Ashton Mill & Historic District, Cumberland, RI. RIHP&HC, 1981.
- Eleazer Arnold House, Lincoln, RI. Arthur W. Leboeuf, c. 1935.
- Forestdale School, Forestdale, RI. RIHP&HC, 1980.
- Locomotive at the Sayles Finishing Plant, Saylesville, RI., Rhode Island Historical Society, c. 1920.
- Main Street, Woonsocket. Mr. & Mrs. Robert C. Brin, c. 1910.
- John Moo & Son Saw Mill. Blackstone River Valley National Heritage Corridor Commission, date unknown.
- Women at warping creels, J.P. Coats cotton thread mill, Pawtucket, RI. Slater Mill Historic Site, Pawtucket, Rhode Island, c. 1910 - 17
- Woonsocket Falls, Providence & Worcester Co. brochure. Rhode Island Historical Society, 1882.

ALL - AFTERNOON TOURS

All tours will leave from the Stadium Theatre. Please note departure time for tours as some differ from listed session times.

Spaces for tours are limited to a total of 45 and will be filled in the order that registrations are received. The sponsors cannot guarantee that everyone who requests a tour will be accommodated.

B10 PROTECTING THE BLACKSTONE VALLEY'S HISTORIC CHARACTER: BUS TOUR (GS)

NOTE: 12:45 - 5:00, space limited to 45. Due to time constraints, lunch will be available on the bus. At the end of this all-afternoon tours, bus will return to both the Stadium Theatre and, for those who would like to attend the reception, the Museum of Work & Culture.

Sheila Brush, Program Director, Grow Smart Rhode Island
R. Christopher Noonan, Director, Blackstone Valley Institute, Blackstone River Valley National Heritage Corridor Commission

Explore some of the special places that give the Blackstone Valley its unique character and increase your awareness of the threat sprawl poses to these places. In historic urban settings and main streets, traditional town centers and mill villages, and rural landscapes, local activists and planners will share their strategies for protecting community character while accommodating growth.

B11 A BLACKSTONE VALLEY SAMPLER: BUS TOUR (GI)

NOTE: 1:30 - 5:00, space limited to 45. At the end of this all-afternoon tours, bus will return to both the Stadium Theatre and, for those who would like to attend the reception, the Museum of Work & Culture.

Daniel Meharg, Ranger, NPS
Jack Whittaker, Ranger, NPS

Join Rangers from the National Park Service on this tour that will cover the high points of the Birthplace of the American Industrial Revolution. From its cradle at Slater Mill in Pawtucket to mill villages and hilltop farming towns, experience the first planned industrial community of Slatersville, the canal and towpath at Riverbend Farm, and the utopian village turned company town, Hopedale.

SHARE YOUR ORGANIZATION'S WORK

Table space will be available so that nonprofit organizations may share printed materials and announcements of upcoming events. Leftover materials must be removed by 5:00 p.m. as unclaimed materials will be discarded. Please call 222-4142 to reserve space and for further details.

PANEL SESSIONS - WOONSOCKET

At the end of panel sessions in Woonsocket, shuttle service will be available to the Museum of Work & Culture for those who would like to attend the reception. Shuttle service will also be available back to the Stadium at the end of the reception.

C1 INTERPRETING THE THREE-DECKER (CH)

Moderator: Albert Klyberg, Executive Director, Heritage Harbor Museum
Dr. Kingston Heath, Professor of Architectural History, University of North Carolina at Charlotte
Dr. Robert L. Macieski, Professor of History, University of New Hampshire
Michael Steinitz, Survey Director, Massachusetts Historical Commission

With plans to replicate a classic, three-decker as an exhibit, the Heritage Harbor Museum faces many challenges in its interpretation of this familiar structure. With a slightly different twist on the concept of a design charrette, panelists will try to come up with an interpretive outline for this life-sized exhibit.

C2 GENEALOGICAL WORKSHOP (CH)

Claire V. Brisson-Banks, Former Director, Family History Center, The Church of Latter Day Saints
Jan Burkhart, Librarian, American French Genealogical Society
Meredith Paine Sorozan, Associate Library Director, RI Historical Society

Discover your own cultural heritage! This workshop, held in the American-French Genealogical Society's library, will show you how to track down and access the resources that are available locally and regionally.

C3 FINANCIAL TOOLS OF REVITALIZATION (MS)

Moderator: Kenneth F. Payne, Senior Policy Advisor to the RI Senate
Carol Corwin, Vice President & Community Development Officer, Fleet Bank
Jeffery Gofton, Supervisor, State Community Development Program, Municipal Affairs

Find out how to fund projects and programs in downtown historic districts. The dialogue of this round table discussion panel will encompass funding sources, eligibility, and different approaches to help guide your efforts in revitalizing your downtown.

C3 THE MAIN STREET APPROACH & THE STADIUM THEATRE (MS)

Kirsten Means, Executive Director, Main Street Rhode Island
Jeffery Polucha, President, Stadium Theatre Foundation

Sit right on-stage during this session that uses the Stadium Theatre as a microcosm of the Main Street Program's 4 Point Approach. Representatives from each group will show how to apply this strategy to your efforts in downtown revitalization. A short backstage tour will follow.

PANEL SESSIONS - SLATERSVILLE

At the end of panel sessions in Slatersville, shuttle service will be available back to Woonsocket and will stop at both the Stadium Theatre and the Museum of Work & Culture, for those who would like to attend the reception. Shuttle service will be available back to the Stadium at the end of the reception.

C4 SAVING OUR RURAL LANDSCAPES (GS)

Moderator: Frederick J. Vincent, Associate Director for Policy & Administration, RI DEM
Christy Anderberg, Executive Director, Metacomet Land Trust, Inc.
Kathleen Bridgehouse, Land Protection Specialist, The Nature Conservancy
Vicky J. O'Neal, Resource Conservationist, Natural Resources Conservation Service

Rural landscapes are being lost at an increasing rate. With the common goal of saving these diminishing landscapes, representatives from various agencies will outline the focus of their organization and discuss the strategies, efforts, and plans to acquire, save, and preserve open lands.

C5 LOST INDUSTRIES (VA)

Paul Robinson, Senior Archaeologist, RIHP&HC
Ned Connors, Edward Connors & Associates
Matthew A. Kierstead, President, Southern New England Chapter, Society for Industrial Archeology

As technologies change, whole industries and their sites can be abandoned and lost as the products and processes associated with them become obsolete. Learn about some of the industries and processes found locally as panelists present their research and findings on these lost treasures.

C6 TIMBER FRAMING (VA)

Moderator: Roberta Randall, Preservation Architect, RIHP&HC
Thomas Paske, Architectural Preservation
Jack A. Sobon, Architect & Author
Dr. David Yeomans, Senior Visiting Research Fellow, Liverpool University

Timber frame construction was the prevalent framing system until balloon construction took dominance in the latter half of the 19th century. Timber frame specialists from both the US and England will give presentations on timber framing's English precedent, clues to and misconceptions on dating structures, and the different systems used during construction.

Key to session tracks:

CH - Cultural Heritage
GI - General Interest
GS - Grow Smart
MS - Main Street
VA - Vernacular Architecture

Getting to the Conference

The conference will be held at the Stadium Theatre and locations in downtown Woonsocket and Slatersville. Upon arrival at the conference, attendees must check in at the registration table before attending any session. Registration will be located at the Stadium Theatre between 8 a.m. and 2 p.m. Since a large audience is expected, please allow extra time for registration and plan to arrive at registration by 8:30 a.m. Shuttle service will be available between conference designated parking areas and the Stadium Theatre.

ARRIVING BY CAR

From the North, follow Route 146 South and take the exit for Route 104. Turn left on Route 104 North and go approximately 1 mile. Go straight through traffic light at Route 146A where Route 104 becomes Providence Street. Follow Providence Street approximately 0.7 miles to its end and turn right onto South Main Street. Go approximately 0.4 miles to second traffic light at Market Square and bear left to stay on Main Street. Approximately 0.4 miles ahead at blinking light, go straight onto Clinton Street, passing under railroad bridge. Go approximately 0.3 miles and turn left onto Worrall Street. At end of Worrall take left onto Social Street. The Stadium Theatre is on the left, opposite Monument Square.

From the South, follow Route 146 North and take the exit for Route 104. Turn left on Route 104 North and go approximately 0.8 miles. Go straight through traffic light at Route 146A where Route 104 becomes Providence Street. Follow Providence Street approximately 0.7 miles to its end and turn right onto South Main Street. Go approximately 0.4 miles to second traffic light at Market Square and bear left to stay on Main Street. Approximately 0.3 miles ahead at blinking light, go straight onto Clinton Street, passing under railroad bridge. Go approximately 0.2 miles and turn left onto Worrall Street. At end of Worrall take left onto Social Street. The Stadium Theatre is on the left, opposite Monument Square.

PARKING

(see map on following page)

Numerous municipal and private parking lots are located within 1/2 mile of the Stadium Theatre. Follow conference parking signs. Shuttle service will be available from designated conference parking areas from 8:00 a.m. to 9:30 a.m. Parking is also available on local streets where permitted.

HANDICAPPED PARKING

Handicapped parking is available in all municipal parking lots. Please call (401) 222-4142 for further information.

ARRIVING BY BUS

From Providence, RIPTA bus service Route 54 stops at the Clinton Street municipal parking lot in Woonsocket. From the Clinton Street bus stop, walk under the railroad bridge, and turn right at Main Street. The Stadium Theatre is two blocks up, on the right, opposite Monument Square. Call RIPTA at 1-800-244-0444 or check their website at www.ripta.com for Saturday service schedule and details.

THE 2000 STATEWIDE HISTORIC PRESERVATION CONFERENCE IS MADE POSSIBLE THROUGH GRANTS AND FUNDING FROM:

THE RHODE ISLAND HISTORICAL PRESERVATION & HERITAGE COMMISSION

JOHN H. CHAFEE BLACKSTONE RIVER VALLEY NATIONAL HERITAGE CORRIDOR COMMISSION

HERITAGE HARBOR MUSEUM

NATIONAL PARK SERVICE

THE NATIONAL TRUST FOR HISTORIC PRESERVATION

ROGER WILLIAMS UNIVERSITY SCHOOL OF ARCHITECTURE, HISTORIC PRESERVATION PROGRAM

THE CONFERENCE ORGANIZERS GRATEFULLY ACKNOWLEDGE THE STADIUM THEATRE FOR THE USE OF THE THEATRE AND THE NORTH SMITHFIELD HERITAGE ASSOCIATION FOR THEIR ASSISTANCE WITH THE CONFERENCE.